

# MADISON EMS

Energy Management Solutions



# MADISONEMS

**MadisonEMS** puts the control of your energy consumption and building operations in the palm of your hand

- ⚙ Savings up to 25%
- ⚙ Easy to use web based interface
- ⚙ Control and Reduce Maintenance
- ⚙ Verify Service Work
- ⚙ Track Success
- ⚙ Full Diagnostics



# MADISON EMS

**MadisonEMS** puts the control of your energy consumption and building operations in the palm of your hand.

## **Energy Savings up to 25%**

Eliminate costly inefficiencies with a quick ROI

## **Easy to Use Web Based Interface**

Any user authenticated device can log in

## **Control and Reduce Maintenance**

Diagnostic analytics pre-emptively anticipate problems, reducing repair expenses with automatic push notifications

## **Verify Service Work**

Data collected will verify that changes were in fact made and are producing expected results

## **Track Success**

MadisonEMS is servicing hundreds of nationally recognized food retail and convenience store locations

## **Pre-Seasonal Transition Diagnostics Check**

Automatically diagnose equipment that has been dormant BEFORE a seasonal transition, eliminating emergency service calls when unexpected temperature swings can catch you unprepared



# MADISON EMS

## Deliverables:

### HVAC

- Advanced RTU Control / Synchronization
- RTU Supply and Return Temperature Monitoring
- Controlled Local Set Points (wall mounted thermostats)

### Refrigeration

- Cooler / Freezer Temperature Control
- Optimized Defrost Control
- Variable Speed Evaporator Fan Control

### Kitchen/Food Prep

- Grill Hood and Supply Fan Control and Status
- Food Temperature Monitoring



# MADISONEMS

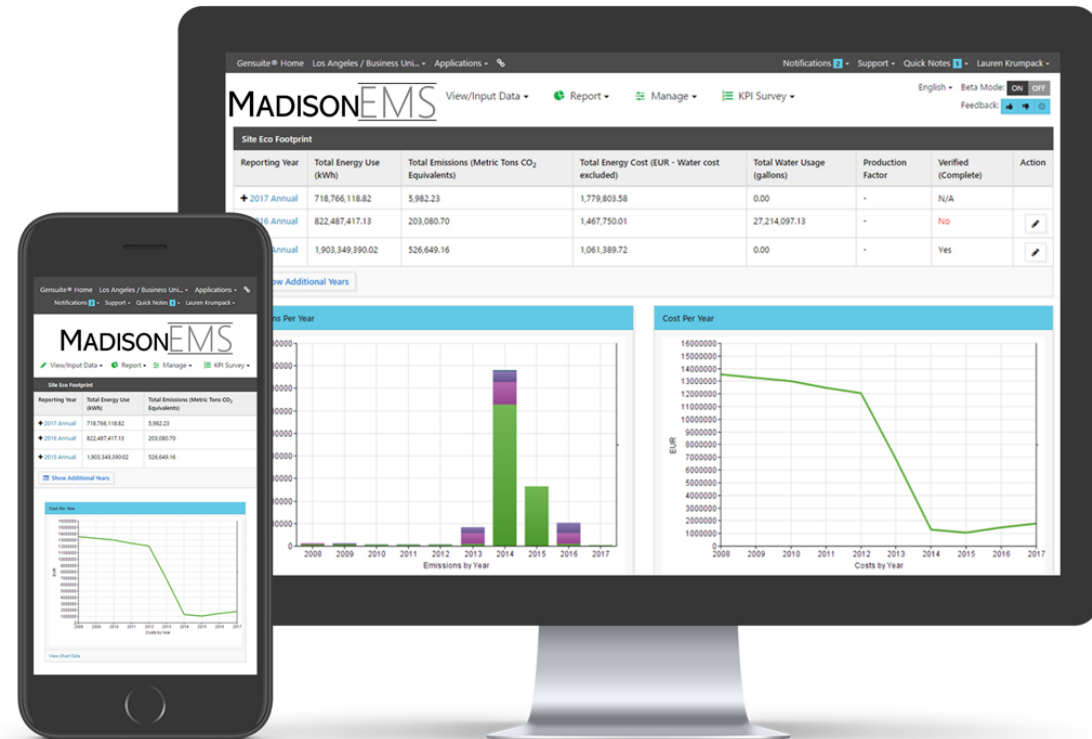
## Deliverables:

### Local Control and Metering

- Local Emergency Override
- Local Grill Hood and Lighting Override
- Smart Demand and Consumption Meter
- Signage Control

### Cloud Based Features

- Outside Temperature Monitoring
- Outdoor Light Level
- MadisonEMS Diagnostic Analytics



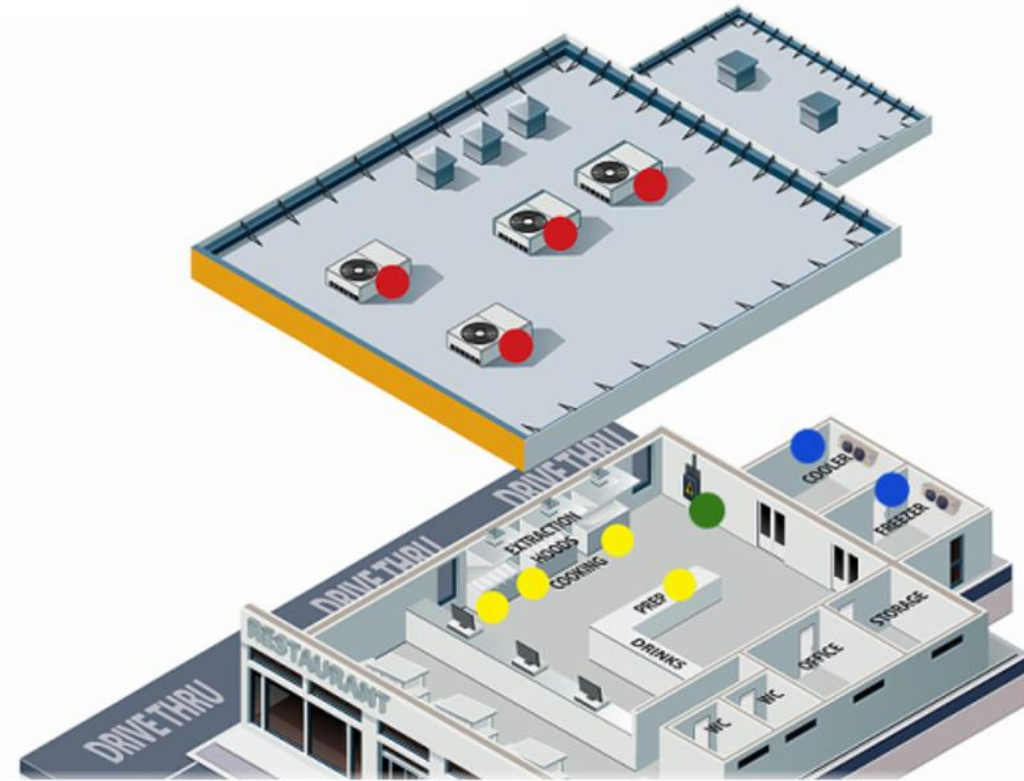


# MADISON EMS

**Facility Managers** can now take control of their energy consumption and building operations by simply logging into their web-based user interface on any authorized device such as a smart phone, tablet, laptop or desktop computer.

**Remote access** to your building energy consumption and operations can be done anywhere, anytime.

## Restaurant



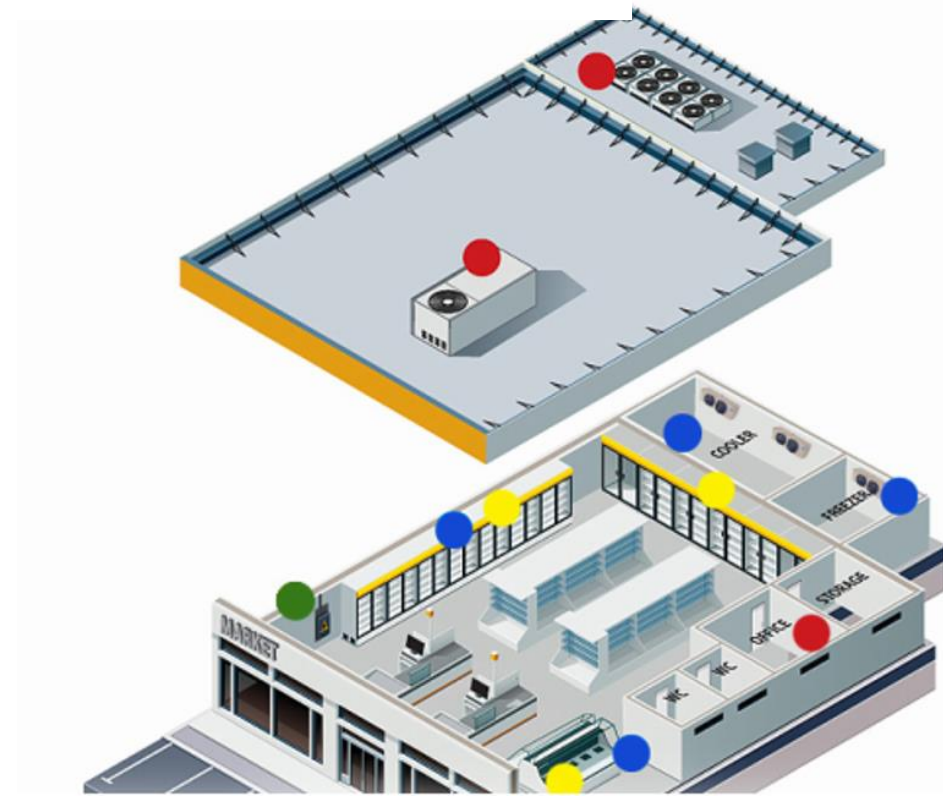
# MADISONEMS

**MadisonEMS** puts the control into your hands to access your building(s) and eliminates unauthorized adjustments to HVAC, refrigeration, lighting or kitchen ventilation settings.

**MadisonEMS** analytics take the guesswork out of the equation and automatically generates push notifications to keep you informed as to how your building is operating. It also anticipates maintenance concerns and will alarm you should some aspect of your operation fall out of normal operating conditions.

**MadisonEMS** becomes your fulltime watch guard and ensures optimal building operation and efficiency.


## Convenience Store




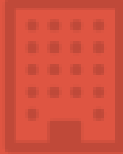
# MADISON EMS


## Easy to Use Dashboard

Building Dashboard - 1501549 Version 2.2 Home > Building Dashboard

**83°F**  
Outdoor Temperature   
[More info](#)

**2**  
Open Tickets   
[More info](#)

**72°F**  
Kitchen Temperature   
[More info](#)

**72°F**  
Dining Temperature   
[More info](#)

### Building Information

**Contact:** Mike Vosika  
**DM:** Chad Williams Building Dispatcher  
**Store Phone:** 7062912998  
Six Mile  
3110 CEDARTOWN HWY SW  
ROME, GA 30161-9590

**Kitchen Units:** 2  
**Dining Units:** 2

### Kitchen Summary

**Area Temp:** 72.4°F  
**Setpoint Slider:** -2.0°F (towards cool)  
**Area Mode:** Cooling (3) (0 of 3 stages)

**RTU3** Lead Cool

**Unit Mode:** Cooling (3) (0 of 2 stages)  
**Area Served:** Kitchen (20)  
**Active Setpoint:** 72.0°F

### Dining Summary

**Area Temp:** 72.1°F  
**Setpoint Slider:** -2.0°F (towards cool)  
**Area Mode:** Cooling (3) (0 of 2 stages)

**RTU1** Lead Cool

**Unit Mode:** Cooling (3) (0 of 1 stages)  
**Area Served:** Dining (10)  
**Active Setpoint:** 72.0°F





# THE MADISON ENERGY GROUP

ENERGY EFFICIENCY SOLUTIONS



5 West Hargett St. | 4<sup>th</sup> Floor  
Raleigh, NC 27601  
Phone: 919-443-2404  
[www.themadisonenergygroup.com](http://www.themadisonenergygroup.com)